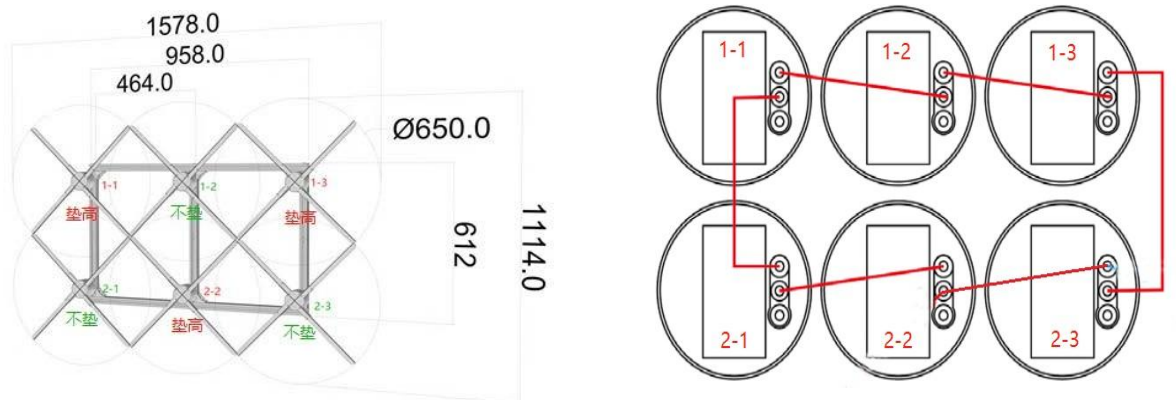


# Upload video to the screen ( version 1.5.x )

## Table of contents

- ◆ Upload video using cutting software 2
  - 1.Download the cutting software .....2
  - 2.Open the cutting software .....2
  - 3.Cutting video ..... 3
  - 4.Enter routing mode ..... 3
  - 5." Update " the device ..... 3
  - 6.According to the combined screen ID Add upload correspondence.....4
  - 7.Click " Upload " to start uploading .....4
- ◆ Use the cutting software to control the tandem .....5
  - 8.Adjust the screen alignment .....5

This description takes 6 pieces of G65 as an example to form a 2-row 3-column multi-screen, as follows:



Sync cable connection diagram (front view)

## ◆ Upload video using cutting software

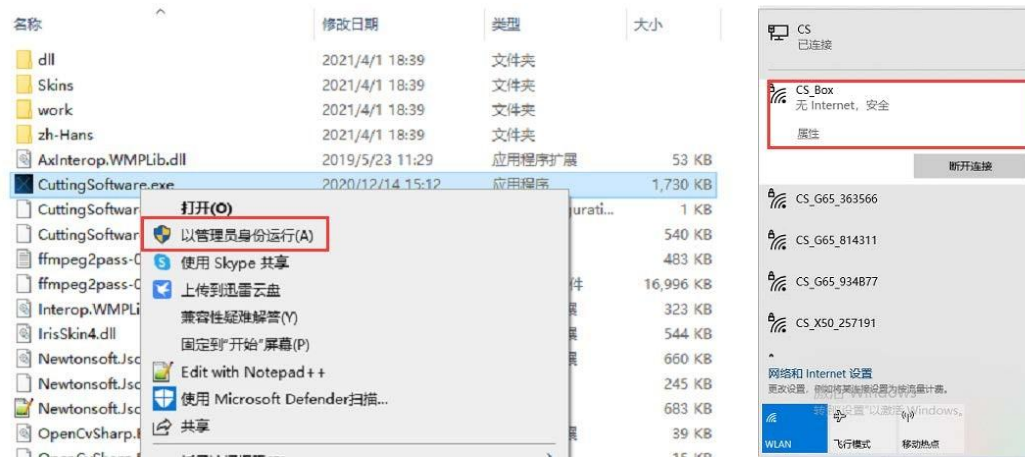
### 1. Download the cutting software

Cutting software download address:

<http://down.holocloud.online/CS.rar> After downloading, unzip it.

### 2. Open the cutting software

After the router is powered on, the computer is connected CS\_Box( password C S 8 8 8 8 8 ) right-click the administrator to run the cutting software, and select the corresponding equipment model



### 3. Cutting video

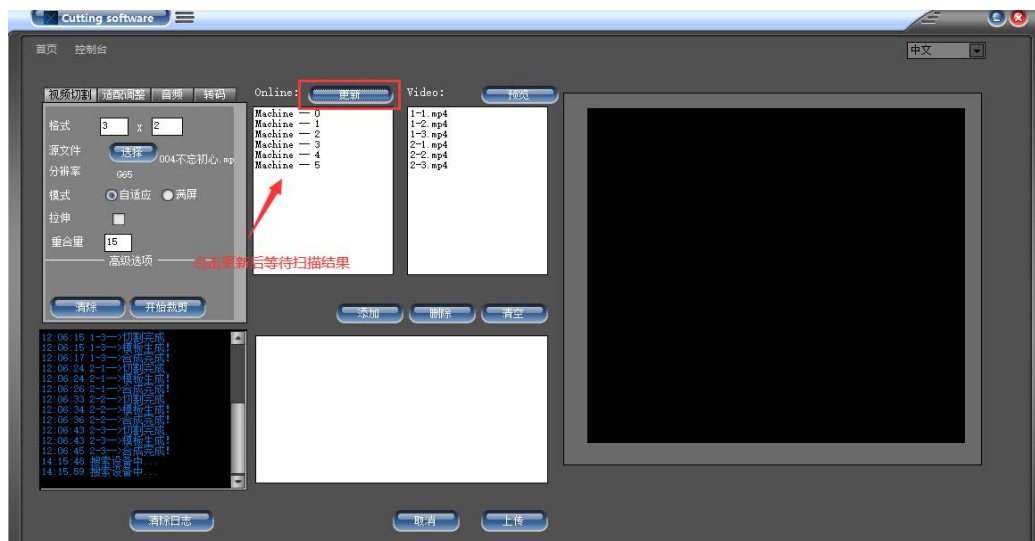


### 4. The screen enters the routing mode

Double-click "MOD E" on the back of the main unit or press "R" on the remote control, the connected screen will enter the routing mode. In the multi-screen mode, the indicator light of the host machine flashes red, the indicator light of the slave machine flashes green, and the WIFI of the device is invisible.

### 5. "Update" the device

Click "Update" of the cutting software, the software will automatically search for connected screen devices. as follows:

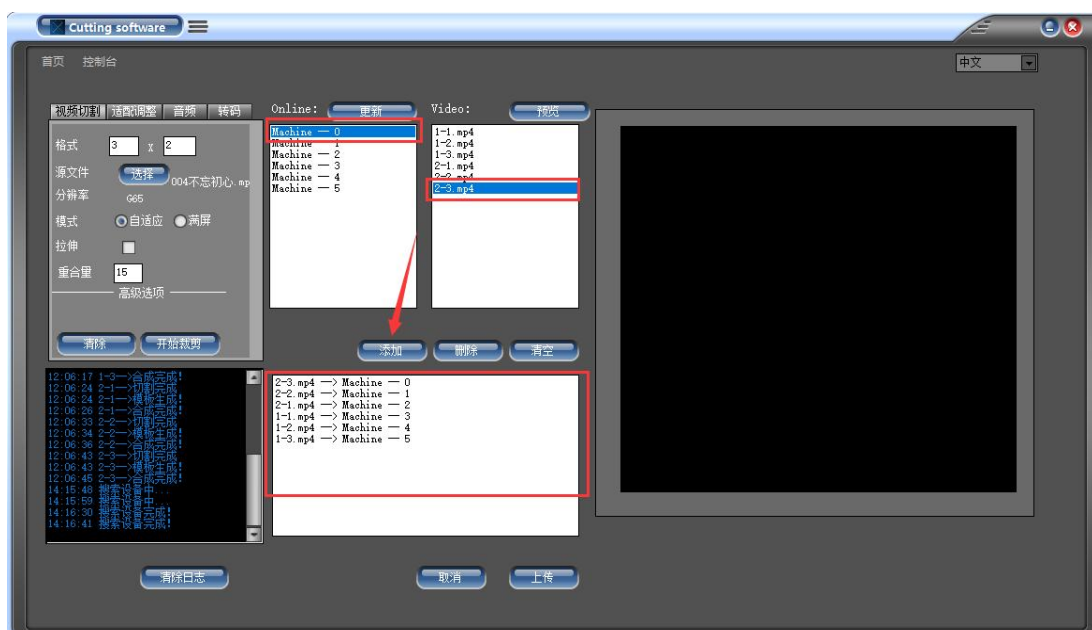


## 6. According to the combined screen ID Add upload correspondence

According to the relationship between the multi-screen installation diagram and the synchronization line, assuming that 2-3 is the host, the corresponding relationship is as follows:

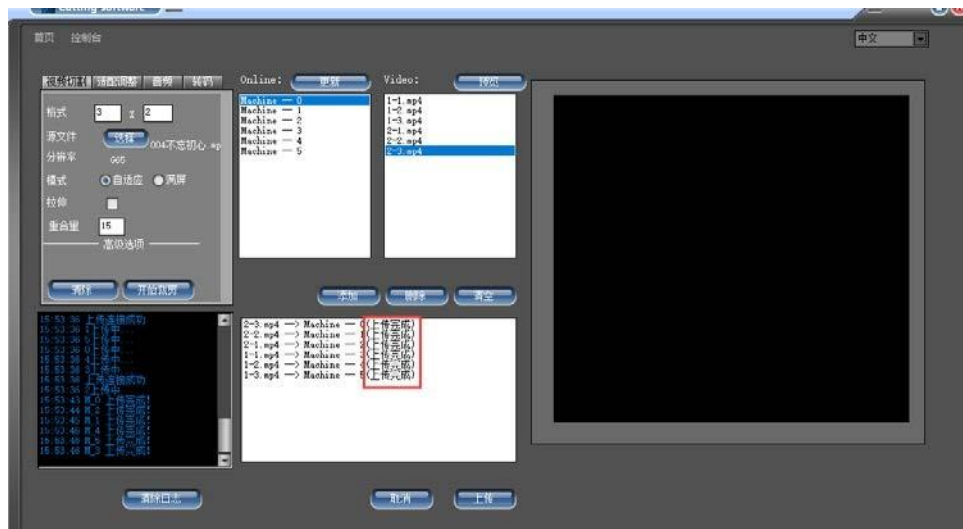
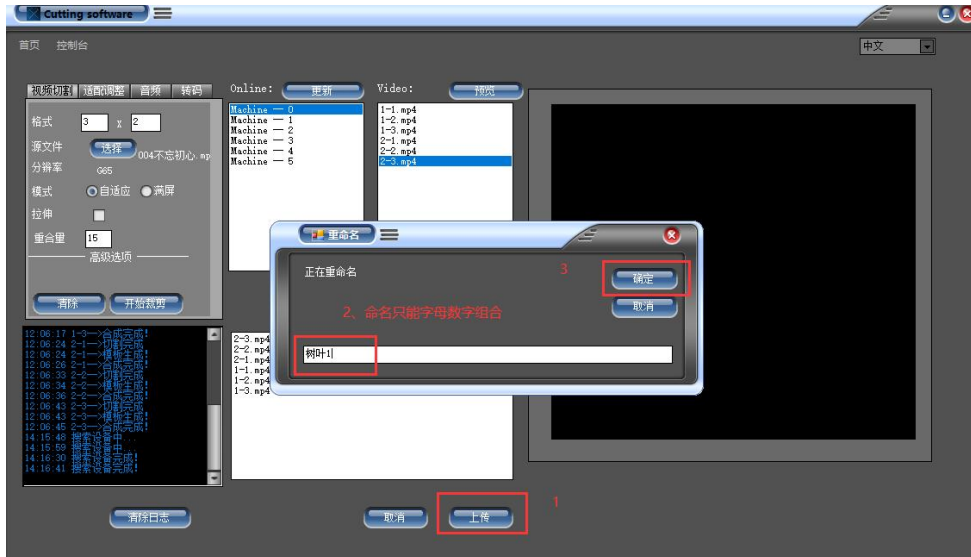
Network ID	Location (video clip )	illustrate
Machine 0	2-3	host is always Machine 0, its physical location is row 2, column 3
Machine 1	2-2	connected to the SYN out of No. 0 machine is No. 1 machine, and its position is the 2nd row and the 2nd column
Machine 2	2-1	machine connected to the SYN out of the 1st machine is the 2nd machine, and its position is the 2nd row and the 1st column
Machine 3	1-1	machine connected to the SYN out of the 2nd machine is the 3rd machine, and its position is the 1st row and the 1st column
Machine 4	1-2	machine connected to the SYN out of the 3rd machine is the 4th machine, and its position is the 1st row and the 2nd column
Machine 5	1-3	machine connected to the SYN out of the 4th machine is the 5th machine, and its position is the 1st row and the 3rd column

After adding the corresponding relationship in the table as follows:



## 7. Click "Upload" to start uploading

Click Upload, enter a video name, and click OK. Wait for the upload to complete! All displays "Upload Complete" means the upload is successful.



- ◆ Use the cutting software to control the gang screen

## **8. Adjust the screen alignment**

Click "Console" to enter the console to control the tandem screen, such as *adjusting the alignment of the tandem screen images* . Proceed as follows:

- (1) Select the device to be adjusted ( as shown below: drop down to select the control device object )
- (2) Adjust the "rotation " parameter on the right side to align the multi-screen images

